

# MONTHLY MEMBERSHIP PROGRESS REPORT

LOCATION CALIFORNIA

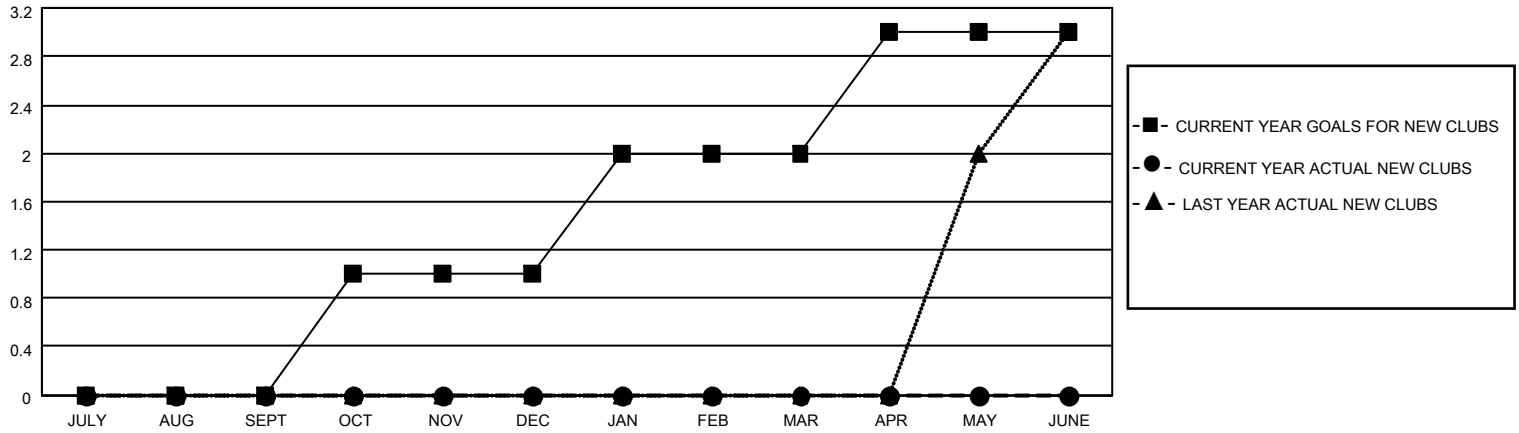
District 4 L3

Results as of: 3/31/2023

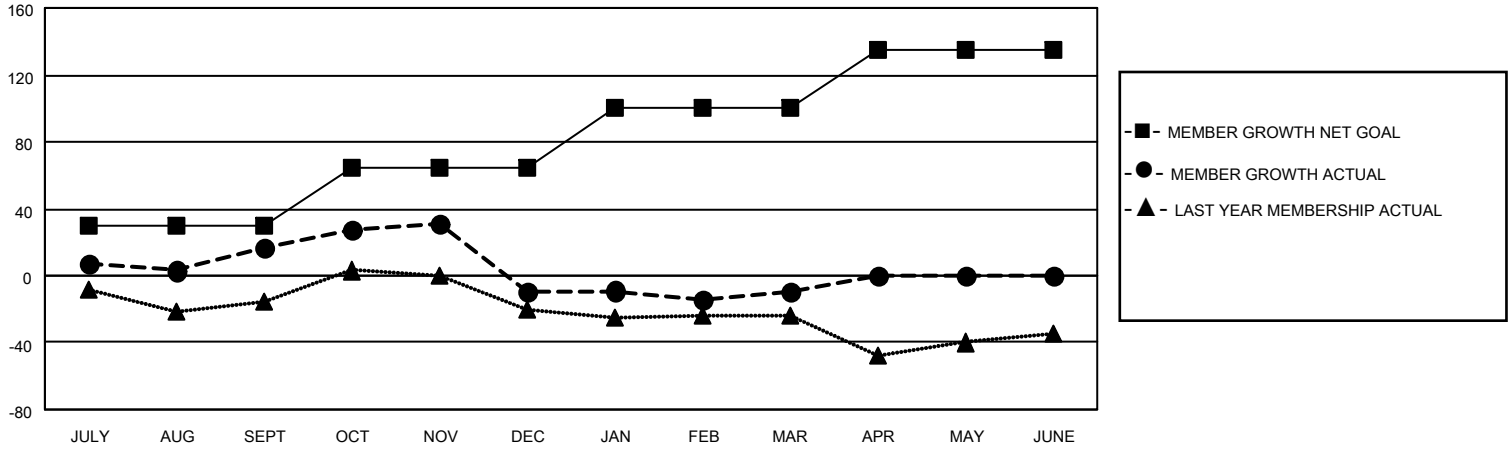
Clubs			
RESULTS FOR 2022-2023			
QUARTER	NEW CLUB GOAL	NEW CLUBS	DROPPED CLUBS
JULY/AUG/SEPT	0	0	1
OCT/NOV/DEC	1	0	3
JAN/FEB/MAR	1	0	0
APR/MAY/JUNE	1	0	0

Members			
RESULTS FOR 2022-2023			
QUARTER	MEMBER GROWTH NET GOAL	MEMBER GROWTH ACTUAL	DROPPED MEMBERS ACTUAL (including transfers)
JULY/AUG/SEPT	30	82	51
OCT/NOV/DEC	35	32	57
JAN/FEB/MAR	35	21	20
APR/MAY/JUNE	35	0	0

**GOALS AND ACTUAL NEW CLUBS CUMULATIVE**



**GOALS AND ACTUAL MEMBERS CUMULATIVE**



**DROPPED CLUBS: 4**

**28 CLUBS OF 58 ADDED 1 OR MORE NEW MEMBERS**

**GENDER DISTRIBUTION**

MALE	600 (52.82%)
FEMALE	533 (46.92%)
NON BINARY	0 (0.00%)
PREFER NOT TO ANSWER	3 (0.26%)

**DROPPED MEMBERS**

[CLICK HERE FOR CUMULATIVE MEMBERSHIP DATA](#)

DECEASED	4
CLUB CANCELLED	25
OTHER	99
<b>TOTAL</b>	<b>128</b>

TOTAL FAMILY UNIT MEMBERS 235

FAMILY MEMBERS PAYING HALF DUES 126